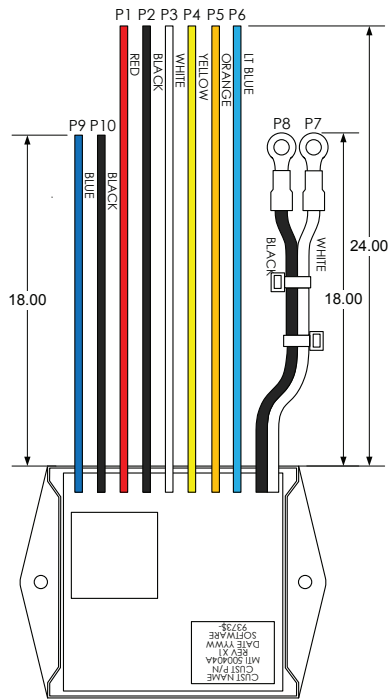


## M404 Temperature Controller

### Installation and Operation



AKG Thermal  
M404

#### Fan

**P9** Blue: + (14AWG)

**P10** Black: - (14AWG)

#### Temperature Sender

**P7** White: Sender Terminal (16AWG)

**P8** Black: Ground (Body) (16 AWG)

#### Power Control Connector

**P1** Red: +9 to 32 Volts DC (14AWG)

**P2** Black: Ground (-) (14AWG)

**P3** White: Manual Override (16AWG)

**P4/5** Yellow/Orange: Temp Select (see table below) (16AWG)

**P6** Lt. Blue: Fan #2 Relay Signal (16AWG) (Optional M404RM Relay Module)

Temp. (F)	TS1 (Yellow)	TS2 (Orange)
115	Black	No Conn.*
125	No Conn.*	No Conn.*
140	No Conn.*	Black
160	Red	No Conn.*
180	No Conn.*	Red
200	Black	Black

\* wire should not be connected  
at this temperature setting.

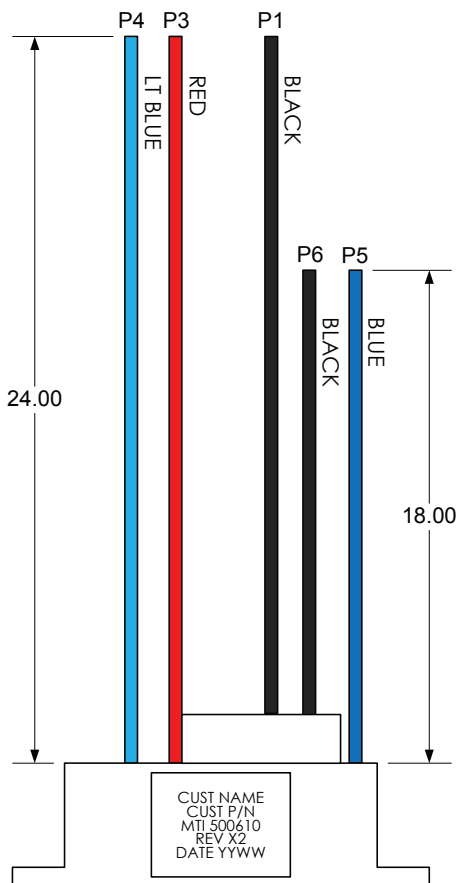
Connect Yellow and/ or Orange wires to the Red wire (Supply Voltage) P1 or Black wire (Ground) P2 to select operating Temperature.

### Installation Instructions

- Temperature Control Module should be fused according to fan's recommended fuse rating. Fuse size should not exceed 35 amps. Input voltage rating is 9-32VDC. The controller is rated to 30A output current.
- Insure that input power is disabled while making the following connections or fan may start automatically.
- Terminate P9 and P10 (blue and black wires) to the fan.
- Terminate P7 the white wire with ring terminal to the center stud terminal on the temperature sender.
- Terminate P8 the black wire with the ring terminal to a grounded surface close to the temperature sender. Insure that this surface is clean and free of corrosion.
- Terminate the following wires.
  - P1** – 9-32 VDC Supply Voltage
  - P2** – Ground
  - P3** – Manual Override (Connect to Ground to run Fan)
  - P4** – Temperature Select 1 (Ref. Table) TS1
  - P5** – Temperature Select 2 (Ref. Table) TS2
  - P6** – Fan #2 Relay Signal (if used) to M404RM Relay Module, Relay Signal P4.

## M404RM Relay Module

### Installation and Operation



AKG Thermal  
M404RM

#### Fan

**P5** Blue: + (14AWG)

**P6** Black: - (14AWG)

#### Power Control

**P1** Black: Ground (-) (14AWG)

**P3** Red: +9 to 32 Volts DC (14AWG)

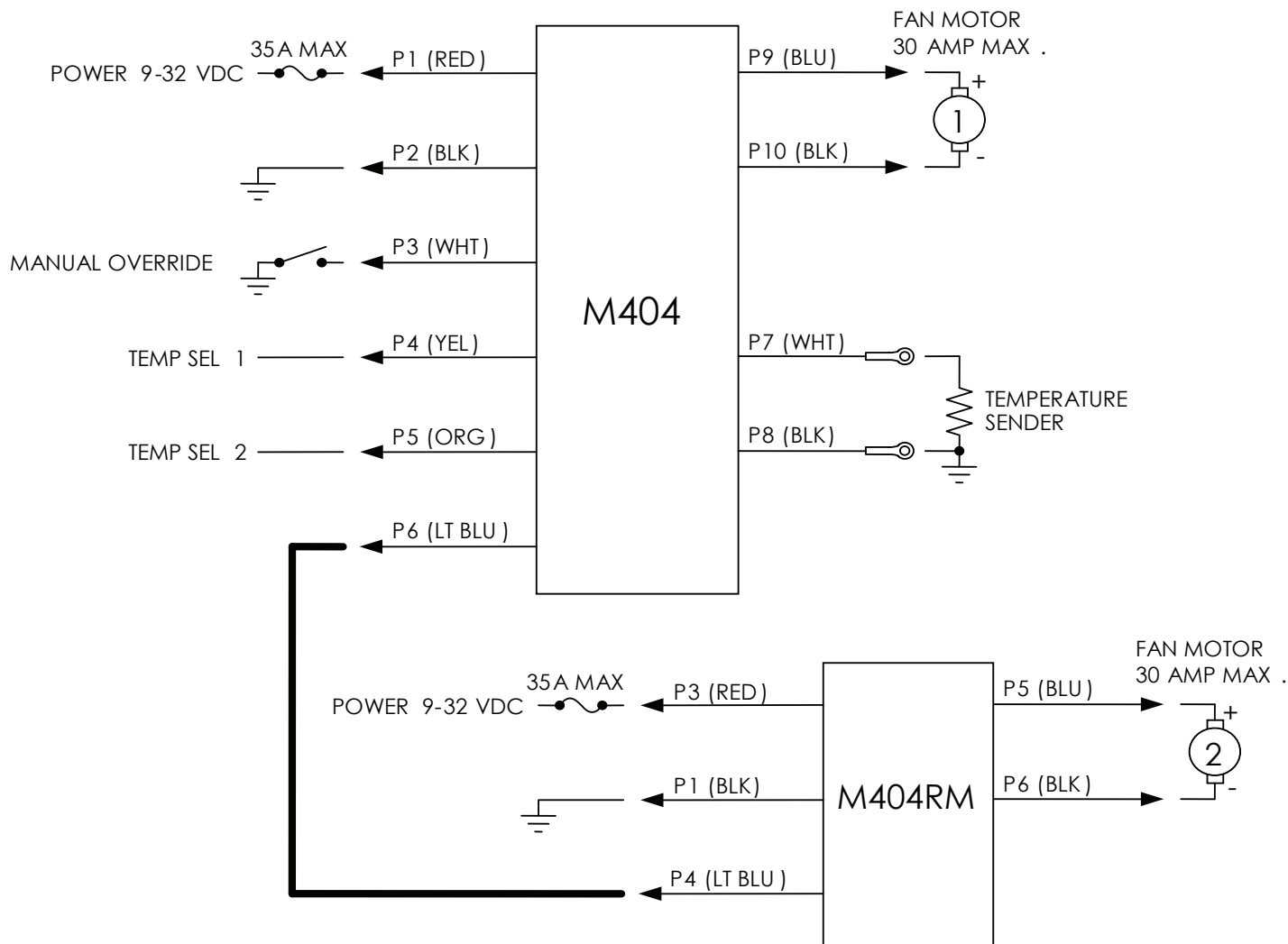
**P4** Lt. Blue: Fan #2 Relay Signal (16AWG)

### Installation Instructions

1. Relay Module should be fused according to fan's recommended fuse rating. Fuse size should not exceed 35 amps. Input voltage rating is 9-32VDC. The module is rated to 30A output current.
2. Insure that input power is disabled while making the following connections or fan may start automatically.
3. Terminate P5 and P6 (blue and black wires) to the fan.
4. Terminate the following wires.
  - P1** – Ground
  - P3** – 9-32 VDC Supply Voltage
  - P4** – Fan #2 Relay Signal to M404 Temperature Controller, Relay Signal P6.

## Dual Fan Schematic

→ = CUSTOMER SUPPLIED TERMINATION



### Contact us



**AKG Thermal Systems, Inc.**  
 P.O. Box 189  
 809 Mattress Factory Road  
 Mebane, NC 27302-0189

Phone + 1 919 563 4871  
 Fax + 1 919 563 4917  
 e-Mail [sales@akgts.com](mailto:sales@akgts.com)  
 Internet [www.akgts.com](http://www.akgts.com)

